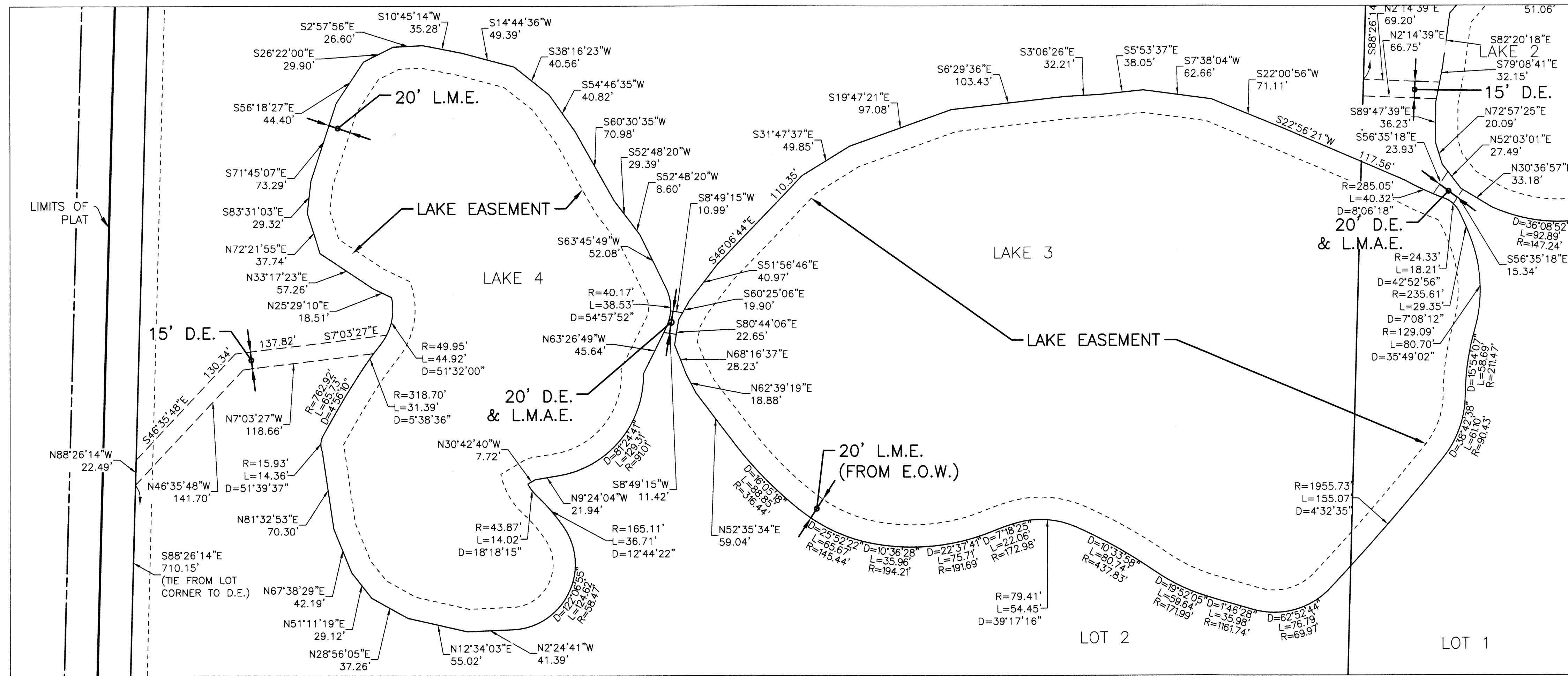
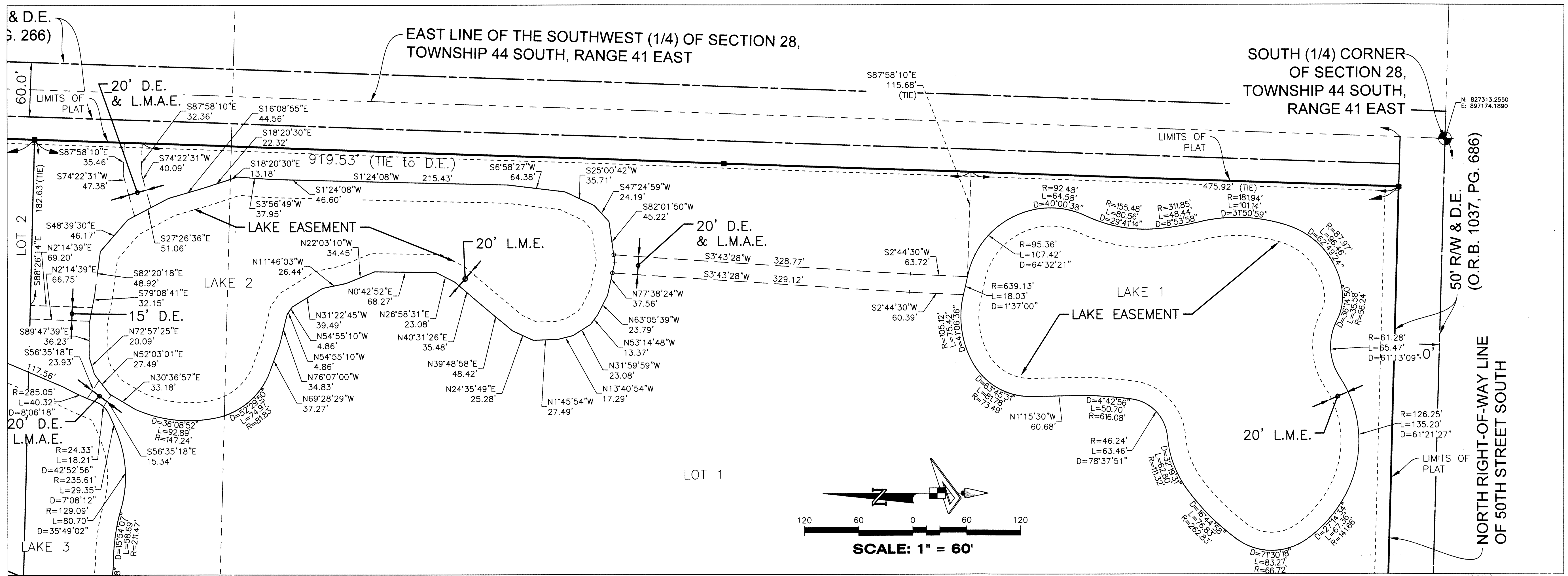


WINDSOME FARMS

BEING A PORTION OF SECTION 28, TOWNSHIP 44 SOUTH, RANGE 41 EAST,
VILLAGE OF WELLINGTON, PALM BEACH COUNTY, FLORIDA.



LEGEND

- P.O.B. ----- POINT OF BEGINNING
- P.O.C. ----- POINT OF COMMENCEMENT
- P.B. ----- PLAT BOOK
- D.B. ----- DEED BOOK
- O.R./O.R.B. ----- OFFICIAL RECORDS BOOK
- PG./PG(S) ----- PAGE(S)
- R/W ----- RIGHT-OF-WAY
- C.C.R. ----- CERTIFIED CORNER RECORD
- P.B.C. ----- PALM BEACH COUNTY
- L.E. ----- LAKE EASEMENT
- L.M.E. ----- LAKE MAINTENANCE EASEMENT
- L.M.A.E. ----- LAKE MAINTENANCE AND ACCESS EASEMENT
- L.A.E. ----- LIMITED ACCESS EASEMENT
- D ----- CENTRAL ANGLE
- R ----- ARC LENGTH
- L ----- RADIUS
- (C) ----- CALCULATED
- (D) ----- DEED
- U.E. ----- UTILITY EASEMENT
- D.E. ----- DRAINAGE EASEMENT
- B.E. ----- PRIVATE BRIDLE EASEMENT
- L.B.E. ----- LANDSCAPE BUFFER EASEMENT
- P.B.E. ----- PUBLIC BRIDLE EASEMENT
- 28-44-41 ----- SECTION-TOWNSHIP-RANGE
- PRM ----- PERMANENT REFERENCE MONUMENT
- SET 4"x4" CONCRETE MONUMENT WITH 2" ALUMINUM DISK STAMPED "PRM LB 7768"

